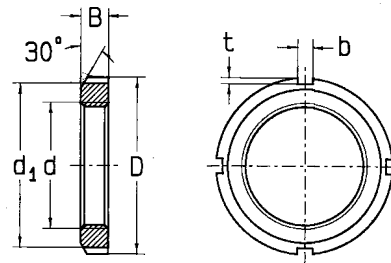


Locknuts

Thread Sizes M20 x 1 mm – M200 x 3 mm

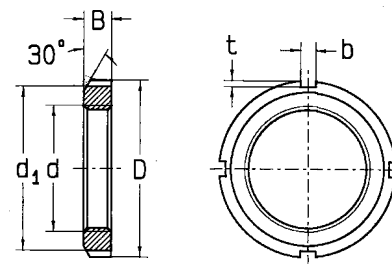


Thread d	Dimensions					Locknut Designation	Weight ~	Corresponding Lock Washer
	D	d ₁	B	b	t			
	mm						kg lbs	
M20 x 1	32	26	6	4	2	KM4	0.019 0.042	MB4
M25 x 1.5	38	32	7	5	2	KM5	0.025 0.055	MB5
M30 x 1.5	45	38	7	5	2	KM6	0.043 0.095	MB6
M35 x 1.5	52	44	8	5	2	KM7	0.053 0.117	MB7
M40 x 1.5	58	50	9	6	2.5	KM8	0.085 0.187	MB8
M45 x 1.5	65	56	10	6	2.5	KM9	0.120 0.265	MB9
M50 x 1.5	70	61	11	6	2.5	KM10	0.150 0.331	MB10
M55 x 2	75	67	11	7	3	KM11	0.160 0.353	MB11
M60 x 2	80	73	11	7	3	KM12	0.170 0.375	MB12
M65 x 2	85	79	12	7	3	KM13	0.200 0.441	MB13
M70 x 2	92	85	12	8	3.5	KM14	0.240 0.529	MB14
M75 x 2	98	90	13	8	3.5	KM15	0.290 0.639	MB15
M80 x 2	105	95	15	8	3.5	KM16	0.400 0.882	MB16
M85 x 2	110	102	16	8	3.5	KM17	0.450 0.992	MB17
M90 x 2	120	108	16	10	4	KM18	0.560 1.235	MB18
M95 x 2	125	113	17	10	4	KM19	0.660 1.455	MB19
M100 x 2	130	120	18	10	4	KM20	0.700 1.543	MB20
M105 x 2	140	126	18	12	5	KM21	0.840 1.852	MB21
M110 x 2	145	133	19	12	5	KM22	0.970 2.138	MB22
M115 x 2	150	137	19	12	5	KM23	1.010 2.227	MB23

Locknut designations printed in bold face type are currently in our manufacturing schedule.
Those shown in normal face type are made to order.

Locknuts

Thread Sizes M20 x 1 mm – M200 x 3 mm



Thread d	Dimensions					Locknut Designation	Weight ~	Corresponding Lock Washer
	D	d ₁	B	b	t			
	mm						kg lbs	
M120 x 2	145	135	20	12	5	KML24	0.780	MBL24
	155	138	20	12	5	KM24	1.720 1.080 2.381	MB24
M125 x 2	160	158	21	12	5	KM25	1.190 2.623	MB25
M130 x 2	155	145	21	12	5	KML26	0.880	MBL26
	165	149	21	12	6	KM26	1.940 1.250 2.756	MB26
M135 x 2	175	160	22	14	6	KM27	1.550 3.417	MB27
M140 x 2	165	155	22	12	5	KML28	0.990	MBL28
	180	160	22	14	6	KM28	2.183 1.600 3.527	MB28
M150 x 2	180	170	24	14	5	KML30	1.380	MBL30
	195	171	24	14	6	KM30	3.042 2.030 4.475	MB30
M160 x 3	190	180	25	14	5	KML32	1.560	MBL32
	210	182	25	16	7	KM32	3.439 2.590 5.710	MB32
M170 x 3	200	190	26	16	5	KML34	1.720	MBL34
	220	193	26	16	7	KM34	3.792 2.800 6.173	MB34
M180 x 3	210	200	27	16	5	KML36	1.950	MBL36
	230	203	27	18	8	KM36	4.299 3.070 6.768	MB36
M190 x 3	220	210	28	16	5	KML38	2.050	MBL38
	240	214	28	18	8	KM38	4.519 3.390 7.474	MB38
M200 x 3	240	222	29	18	8	KML40	2.980	MBL40
	250	226	29	18	8	KM40	6.570 3.690 8.135	MB40

Locknut designations printed in bold face type are currently in our manufacturing schedule.
Those shown in normal face type are made to order.

