

TIMKEN

The Timken Company
 4500 Mt Pleasant St. NW
 N. Canton, OH 44720
 Phone: (234) 262-3000
 E-Mail: CustomerCAD@timken.com • Web site: www.timken.com

Timken Part Number X33024M - Y33024M, Tapered Roller Bearings - TS (Tapered Single) Metric

This is the most basic and most widely used type of tapered roller bearing. It consists of two main separable parts: the cone (inner ring) assembly and the cup (outer ring). It is typically mounted in opposing pairs on a shaft.



[Specifications](#) | [Dimensions](#) | [Abutment and Fillet Dimensions](#) | [Basic Load Ratings](#) | [Factors](#)

Specifications

Series	33024M
Cone Part Number	X33024M
Cup Part Number	Y33024M
Design Units	METRIC
Bearing Weight	4.200 Kg 9.20 lb
Cage Type	Stamped Steel

Dimensions

d - Bore	120 mm 4.7244 in
D - Cup Outer Diameter	180 mm 7.0866 in

B - Cone Width	48 mm 1.8898 in
C - Cup Width	38 mm 1.4961 in
T - Bearing Width	48.000 mm 1.8898 in

Abutment and Fillet Dimensions

R - Cone Backface "To Clear" Radius¹	2.540 mm 0.1 in
r - Cup Backface "To Clear" Radius²	2.03 mm 0.08 in
da - Cone Frontface Backing Diameter	130.05 mm 5.12 in
db - Cone Backface Backing Diameter	134.11 mm 5.28 in
Da - Cup Frontface Backing Diameter	172 mm 6.81 in
Db - Cup Backface Backing Diameter	166.12 mm 6.54 in
Ab - Cage-Cone Frontface Clearance	3.3 mm 0.13 in
Aa - Cage-Cone Backface Clearance	3.8 mm 0.15 in
a - Effective Center Location³	-11.9 mm -0.47 in

Basic Load Ratings

C90 - Dynamic Radial Rating (90 million revolutions)⁴	91300 N 20500 lbf
C1 - Dynamic Radial Rating (1 million revolutions)⁵	352000 N 79200 lbf
C0 - Static Radial Rating	603000 N 135000 lbf
C_{a90} - Dynamic Thrust Rating (90 million revolutions)⁶	47700 N 10700 lbf

Factors

K - Factor⁷	1.91
e - ISO Factor⁸	0.31
Y - ISO Factor⁹	1.97
G1 - Heat Generation Factor (Roller-Raceway)	342
G2 - Heat Generation Factor (Rib-Roller End)	93.7
Cg - Geometry Factor	0.107

¹ These maximum fillet radii will be cleared by the bearing corners.

² These maximum fillet radii will be cleared by the bearing corners.

³ Negative value indicates effective center inside cone backface.

⁴ Based on 90×10^6 revolutions L_{10} life, for The Timken Company life calculation method. C_{90} and C_{a90} are radial and thrust values.

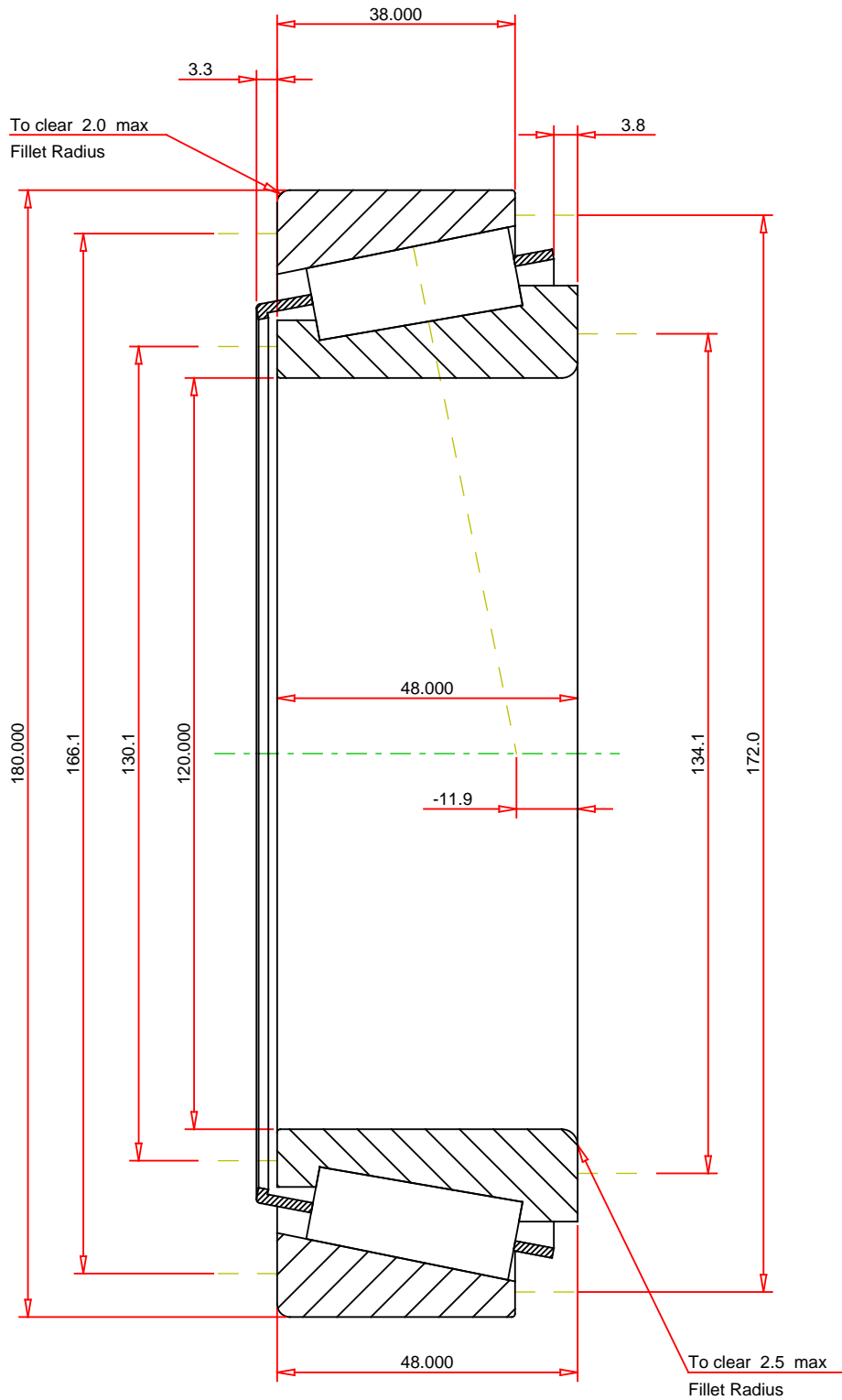
⁵ Based on 1×10^6 revolutions L_{10} life, for the ISO life calculation method.

⁶ Based on 90×10^6 revolutions L_{10} life, for The Timken Company life calculation method. C_{90} and C_{a90} are radial and thrust values for a single-row, $C_{90(2)}$ is the two-row radial value.

⁷ These factors apply for both inch and metric calculations. Consult your Timken representative for instruction on use.

⁸ These factors apply for both inch and metric calculations. Consult your Timken representative for instruction on use.

⁹ These factors apply for both inch and metric calculations. Consult your Timken representative for instruction on use.



METRIC UNITS

ISO Factor - e	0.31
ISO Factor - Y	1.97
Bearing Weight	4.2 kg
Number of Rollers Per Row	29
Effective Center Location	-11.9 mm

TIMKEN®

THE TIMKEN COMPANY
NORTH CANTON, OHIO USA

X33024M - Y33024M
TS BEARING ASSEMBLY

K Factor	1.91
Dynamic Radial Rating - C90	91300 N
Dynamic Thrust Rating - Ca90	47700 N
Static Radial Rating - C0	603000 N
Dynamic Radial Rating - C1	352000 N

Every reasonable effort has been made to ensure the accuracy of the information contained in this writing, but no liability is accepted for errors, omissions or for any other reason.

FOR DISCUSSION ONLY